

Anti-Human IgG (H&L) (Fluorescein Conjugated) Secondary Antibody
Mouse Polyclonal, Fluorescein (FITC)
Catalog # ASR2694**Specification****Anti-Human IgG (H&L) (Fluorescein Conjugated) Secondary Antibody - Product Information**

Description	Anti-HUMAN IgG (H&L) (MOUSE) Antibody Fluorescein Conjugated
Host	Mouse
Conjugate	Fluorescein (FITC)
FP Value	3.9 moles Fluorescein (FITC) per mole of IgG
Target Species	Human
Reactivity	Human
Clonality	Polyclonal
Application	IF, FC
Application Note	FLISA 1:10,000-1:50,000;IF Microscopy 1:1,000-1:5,000;FlowCytometry 1:500-1:2,500
Physical State	Lyophilized
Host Isotype	IgG
Target Isotype	IgG (H&L)
Buffer	0.02 M Potassium Phosphate, 0.15 M Sodium Chloride, pH 7.2
Immunogen	Human IgG whole molecule
Reconstitution Volume	1.0 mL
Reconstitution Buffer	Restore with deionized water (or equivalent)
Stabilizer	10 mg/mL Bovine Serum Albumin (BSA) - Immunoglobulin and Protease free
Preservative	0.01% (w/v) Sodium Azide

Anti-Human IgG (H&L) (Fluorescein Conjugated) Secondary Antibody - Additional Information**Shipping Condition**

Ambient

Purity

This product was prepared from monospecific polyclonal ascites by immunoaffinity chromatography using Human IgG coupled to agarose beads followed by solid phase adsorption(s) to remove any unwanted reactivities. Assay by immunoelectrophoresis resulted in a single precipitin arc against anti-Mouse Serum, Human IgG and Human Serum.

Storage Condition

Store vial at 4° C prior to restoration. For extended storage aliquot contents and freeze at -20° C or below. Avoid cycles of freezing and thawing. Centrifuge product if not completely clear after standing at room temperature. This product is stable for several weeks at 4° C as an undiluted liquid. Dilute only prior to immediate use.

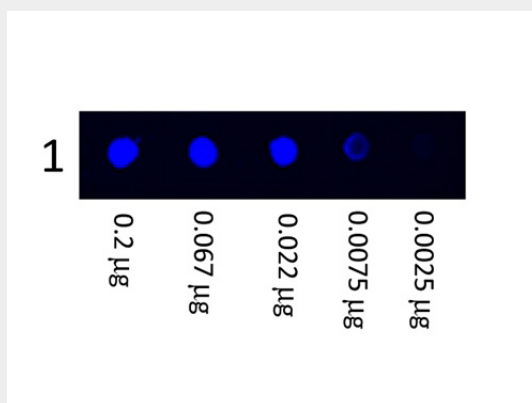
Precautions Note

This product is for research use only and is not intended for therapeutic or diagnostic applications.

Anti-Human IgG (H&L) (Fluorescein Conjugated) Secondary Antibody - Protein Information**Anti-Human IgG (H&L) (Fluorescein Conjugated) Secondary Antibody - Protocols**

Provided below are standard protocols that you may find useful for product applications.

- [Western Blot](#)
- [Blocking Peptides](#)
- [Dot Blot](#)
- [Immunohistochemistry](#)
- [Immunofluorescence](#)
- [Immunoprecipitation](#)
- [Flow Cytometry](#)
- [Cell Culture](#)

Anti-Human IgG (H&L) (Fluorescein Conjugated) Secondary Antibody - Images

Dot Blot showing the detection of Human IgG. A three-fold serial dilution of Human IgG starting at 200ng was spotted onto 0.45 µm nitrocellulose. After blocking in 5% Blotto 1 Hour at 20°C, Anti-Human IgG (H&L) (MOUSE) Antibody Fluorescein Conjugated secondary antibody was used at 1:1000 in Blocking Buffer for Fluorescent Western Blotting and imaged using the Bio-Rad VersaDoc® 4000 MP.